



higher education
& training
Department:
Higher Education and Training
REPUBLIC OF SOUTH AFRICA



HIGHER HEALTH

Higher Education & Training: Health, Wellness and Development Centre

PRESENTATION ON THE WORK OF HIGHER HEALTH

Dr (Prof) Ramneek Ahluwalia

MBBS MBA (UCT) PhD (Public Health)

Chief Executive Officer - HIGHER HEALTH

Professor of Practice, Faculty of Health Sciences,
University of Johannesburg, South Africa

Adjunct Faculty Fellow, Dahdaleh Institute of Global Health
(DI), York University, Canada



www.higherhealth.ac.za

UNIVERSITIES PARTNERSHIP



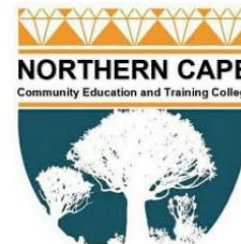
www.higherhealth.ac.za

TVET COLLEGES PARTNERSHIP

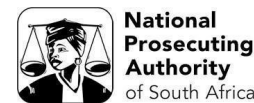


www.higherhealth.ac.za

CET COLLEGES PARTNERSHIP



FUNDERS AND PARTNERS



www.higherhealth.ac.za



HIGHER HEALTH'S SOFT SKILLS ACADEMY



HIGHER HEALTH

Higher Education & Training: Health, Wellness and Development Centre

85%

OF JOB SUCCESS COMES FROM SOFT SKILLS!

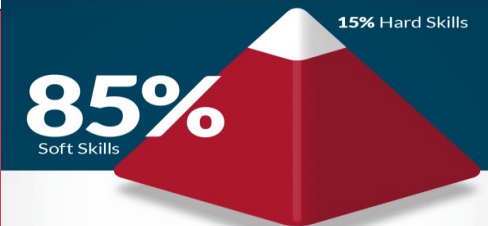
www.higherhealth.ac.za

The Soft Skills Disconnect

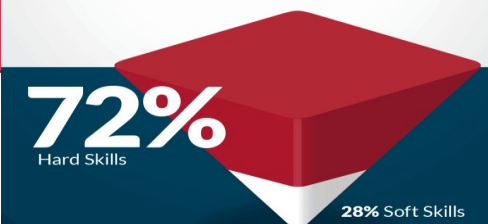
Research conducted by Harvard University, the Carnegie Foundation and Stanford Research Center, has all concluded that

85% of job success comes from having well-developed soft skills and people skills, while only 15% of job success comes from technical skills and knowledge (hard skills).

NEEDS



In 2010 employers spent **\$171.5 billion** on employee training and **27.6%** of those training dollars was on soft skills.¹



ACTUAL DOLLARS SPENT



National
Soft Skills
Association™

¹ Green and Matala, 2011. The state of the industry Report, American Society of Training and Development. Design Copyright © 2015, National Soft Skills Association. All rights reserved throughout the world.

QCTO-ACCREDITED CIVIC AND SOFT SKILLS PROGRAMME, NQF LEVEL 5

Built at basic literacy level – youth centric

Global endorsement

Online with automated certification for CV and Linked-In profile

Accredited NQF Level 5 Skills Programme

Can be made available in SA in different languages



MODULE 1

Civic education and global citizenship
10 Credits

MODULE 2

Gender equity and inclusion
7 Credits

MODULE 3

Mental and emotional intelligence
5 Credits

MODULE 4

Disability inclusion and accessibility
4 Credits

MODULE 5

Physical and sexual health
5 Credits

MODULE 6

Substance, gambling, & gaming abuse and addiction
5 Credits

MODULE 7

Just Energy Transition and Climate change
14 Credits

MODULE 8

Financial literacy
10 Credits



IN DEVELOPMENT:

8 DECENT WORK AND ECONOMIC GROWTH



Module 9: Digital Literacy & AI

10
credits



Digital
literacy



Critical
thinking in a
digital world



Social Media
and gaming



Digital
safety



Ethics and
AI

HIGHER HEALTH SPECIALISES IN BUILDING THE TOP 10 SOFT SKILLS OF THE WORKFORCE (GRADUATE ATTRIBUTES)

- ① Empathy, Listening and Counselling
- ② Civic Responsibility and Peer Education
- ③ Conflict Resolution
- ④ Creativity, Critical Thinking & Problem Solving
- ⑤ Decision Making
- ⑥ Digital Literacy
- ⑦ Presentation Skills, Public Speaking & Communication
- ⑧ Resilience, Confidence & Self-Motivation
- ⑨ Teamwork, Organizational Skills & Leadership Skills
- ⑩ Time-Management & Goal-Setting



Linking & Integrating SDGs

SUSTAINABLE DEVELOPMENT GOALS



HIGHER HEALTH'S PROGRAMMES

Civic and Health Peer Education Programme

30 credits

NQF Level
5

6
modules

Civic and Soft Skills Programme

60 credits

NQF Level
5

8
modules

Digital Literacy and AI

Micro-
credential

Single
module

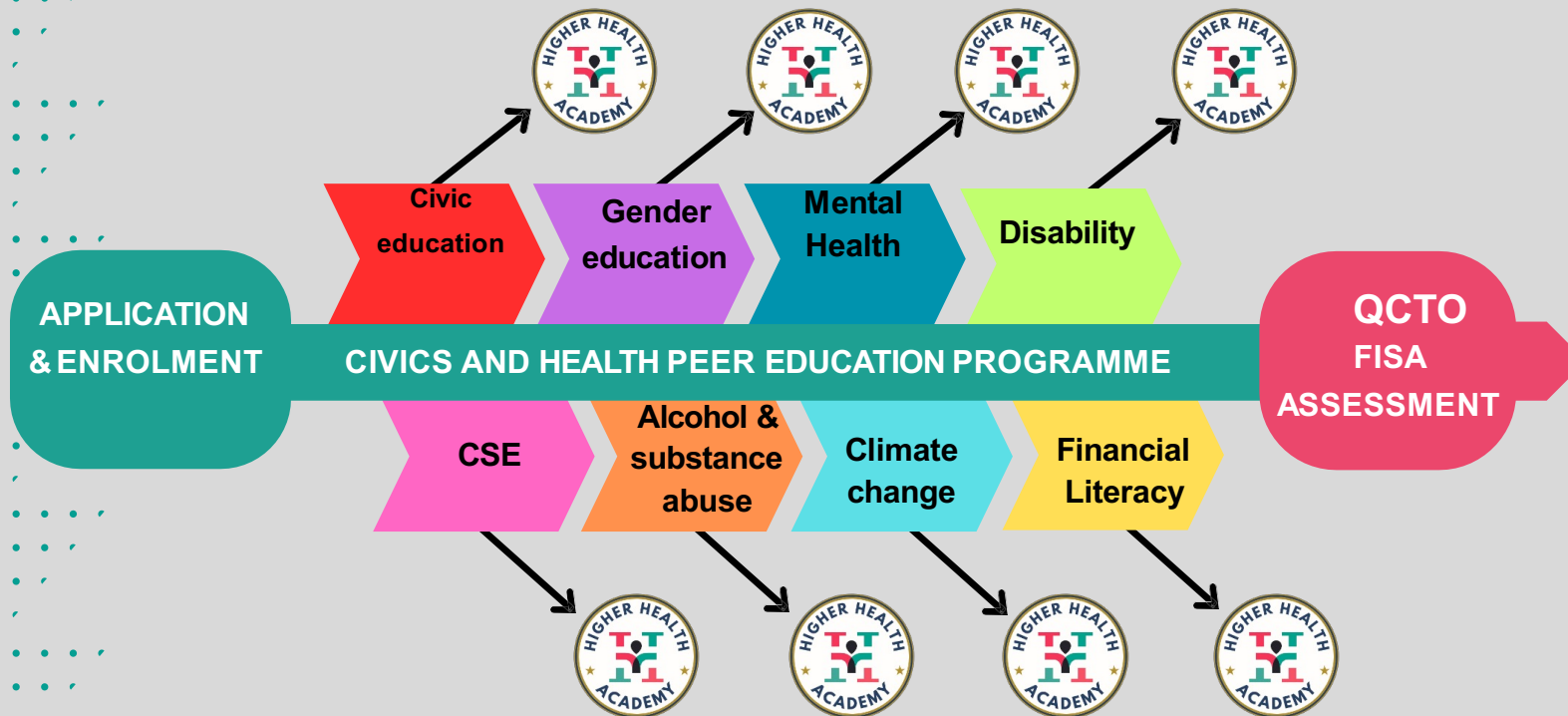
COMING SOON Skills for Life

15 credits

NQF Level
5

7
modules

END TO END DIGITAL PLATFORM SOLUTION



Micro Credential
to be added to
CV and Linked-In
profile

BLENDED LEARNING - DIGITAL POVERTY ON RURAL CAMPUSES



MEASURING IMPACT



Throughput Rates

Have student marks improved?



Student Employability

Do students find employment earlier?



Job Success

Do students perform better in their jobs?

- Higher Health has established a data science lab at Stellenbosch University.
- Employing Post-Doctoral students for longitudinal research looking at the impact of the Civic & Soft Skills programme on the 3 indicators above.

NO. OF STUDENTS COMPLETED MODULES/FISA (FEB-JULY 2025)



Fully
Completed

10 975



Total Number
of Students
Passed

10 389



Pass Rate

95%



Enrolled
Students from
Feb to July
2025

12 935



Throughput
Rate

82%

IMPACT ALREADY SEEN IN SOUTH AFRICA (2021–2024)

**CO-CURRICULUM
SKILLS PROGRAMME
ON GBV =**

367 079

**RISK ASSESSED ON
GBV=**

316 591

19 943

**REFERRED FOR GBV
PSYCHO-SOCIAL
COUNSELLING &
LEGAL SUPPORT**

**CO-CURRICULUM
SKILLS PROGRAMME
ON MENTALHEALTH
=**

421 799

**RISK ASSESSED ON
MENTAL HEALTH =**

353 727

112 627

**MENTAL HEALTH
CRISES MANAGED**

HIGHER HEALTH ACHIEVEMENTS

1
LEARN

PRIMARY LEVEL Knowledge Transfer

HIV, Mental Health, GBV second curriculum resource manual

2
DO

SECONDARY LEVEL Practical Learning

Self-Administered HIV, Mental Health, GBV Risk Screening

3
ACT

TERTIARY LEVEL

Linkage to Youth Friendly Services

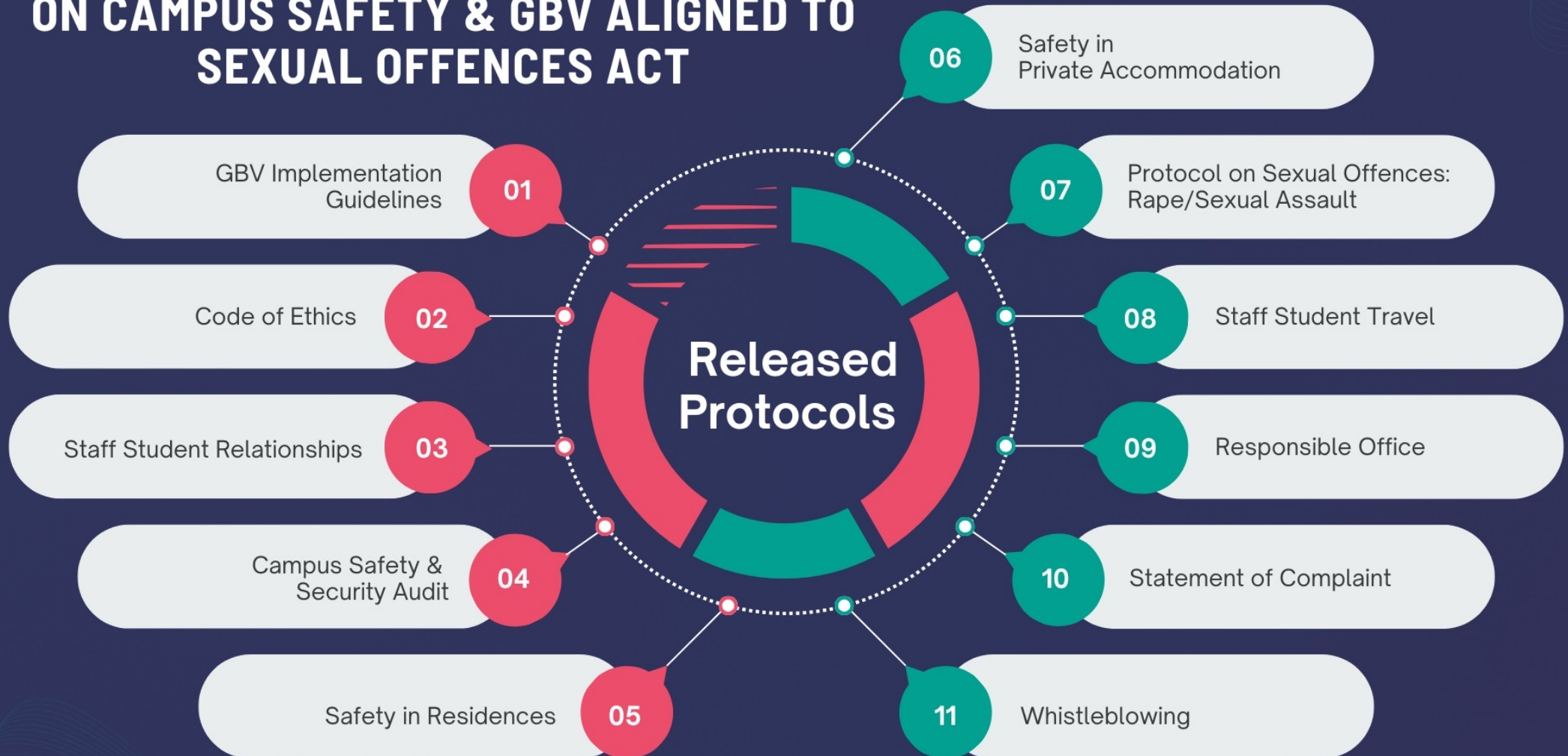
	Jan-Dec 2024	2019 - Dec 2024
Reach	582 985	2 815 193
Co-Curriculum Enrolment	235 174	2 092 822
Students enrolled in CSSP (QCTO)	10 209	N/A
Risk Screening Support	327 714	1 334 052

- Higher Health Toll-free Crisis Helpline
- Psychosocial support provided by mental health professionals
- Referral to professionals outside the PSET facility
- Referral to Specialized Clinical Services through Higher Health Mobile Clinics for HIV, TB, STI, SRHR, NCDs

Students Supported =

	Jan-Dec 2024	2019 - Dec 2024
	1 081 765	4 602 684

HIGHER HEALTH RELEASED PROTOCOLS ON CAMPUS SAFETY & GBV ALIGNED TO SEXUAL OFFENCES ACT



PROTOCOLS AND CHECKLISTS STILL BEING PREPARED / FINALISED



PROTOCOL ON THE LAW

- Deals with amendments to Criminal Procedure (Sexual Offences & related matters) Act, Domestic Violence Act & Harassment Act
- Thuthuzela Care Centres
- Special Police Units

COMING SOON



PROTOCOL ON FEMICIDE

COMING SOON



PROTOCOL ON ALCOHOL & SUBSTANCE ABUSE

COMING SOON



THE ROLE OF HUMAN RESOURCES

COMING SOON



MEN AND BOYS

COMING SOON



M & E MINIMUM STANDARDS CHECKLIST

COMING SOON



CYBER BULLYING

COMING SOON

STUDENT WELLBEING AND SAFETY

- Every entrance at all TVET, University, and CET campuses will proudly display the HIGHER HEALTH 24-hour Toll-Free Helpline number.
- Campus Safety Audits performed as well.



STUDENT WELLBEING & SAFETY IS OUR PRIORITY!

Higher Health 24-Hour Tollfree:

 **0800 36 36 36**

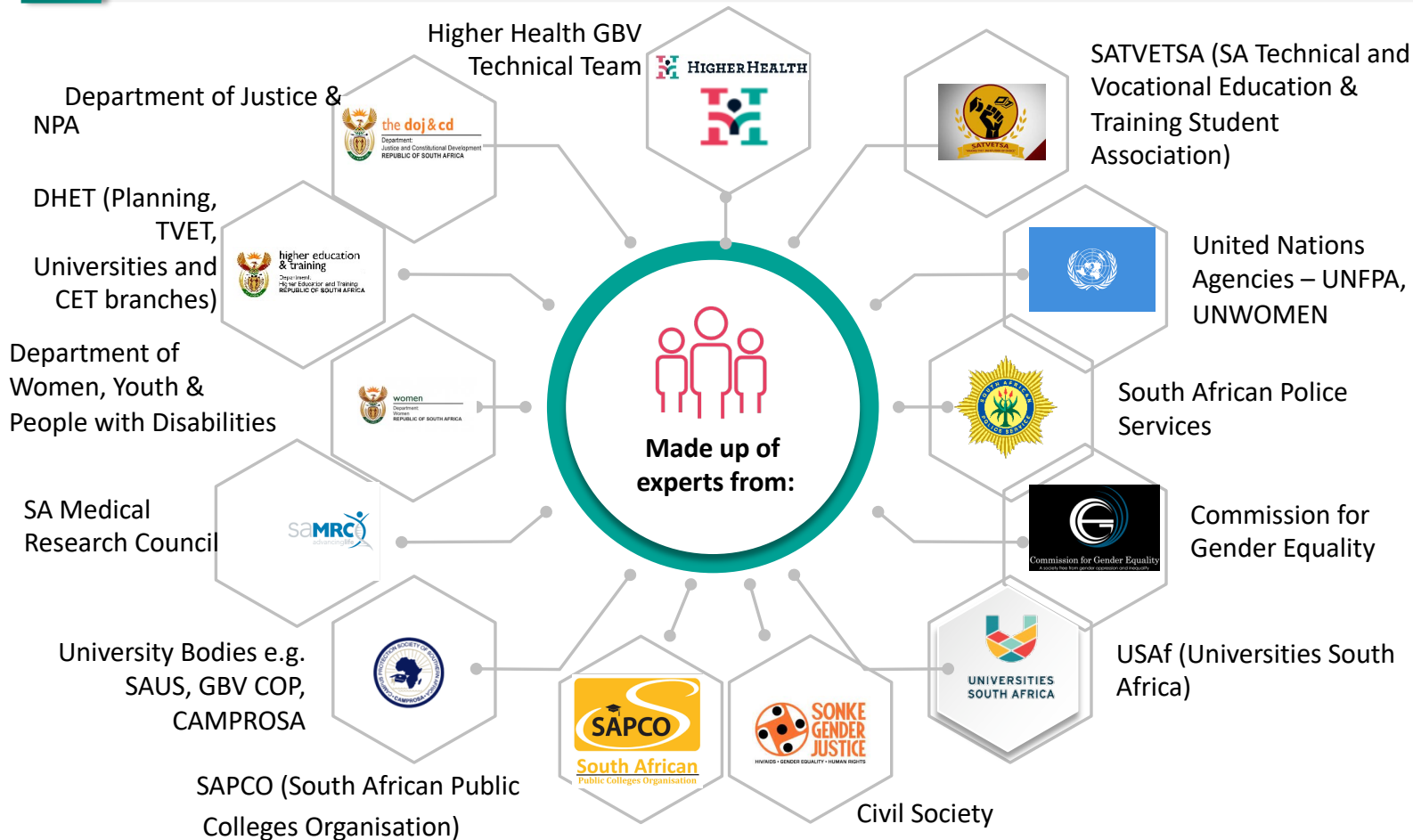
For GBV, Mental Health or HIV support. Free, confidential and available 24 Hours



PSET GBV TECHNICAL TASK TEAM



We set up a PSET Technical Task Team (TTT), chaired by Prof. LenkaBula, under HIGHER HEALTH which is a consultative team of experts, to advise on the work required to implement the DHET framework



- The TTT provides inputs on draft Implementation Guidelines, protocols and other work on GBV undertaken by HIGHER HEALTH for the sector
- The TTT will continue to oversee and provide support to HIGHER HEALTH in its work to implement the DHET GBV Policy Framework

RELATIONSHIP WITH NPA



All victims of sexual offences (rape, sexual assault, sexual intimidation, etc.) must be reported to SAPS through a Thuthuzela care centre.

SAPS takes statements and collects evidence for the NPA to prosecute perpetrators under the Sexual Offences Act.

Higher Health has a MOU with NPA to refer all victims of sexual offences to the nearest Thuthuzela care centre



An Internal Quasi-judicial system exists at all PSET institutions.

All PSETs must have SGBV, and conduct internal disciplinary hearings

THE POWER OF HIGHER HEALTH WITH ITS STRENGTH IN PEER EDUCATION

- Building a strong foundation through Peer Education.
- Over 10,000 trained Peer Educators – our foot soldiers and unsung heroes of South Africa.
- Peer education is the heartbeat of HIGHER HEALTH.
- We believe in it as every initiative draws its strength from it.



HIGHER HEALTH

Higher Education & Training: Health, Wellness and Development Centre



WHAT CAN PEER EDUCATORS DO TOWARDS STUDENT SAFETY?

- Peer Educators have the power to influence, inspire, and mobilise their peers.
- They can play a key role in establishing Campus Policing Forums.
- Campus Policing Forums empower students to take ownership of their safety and security.
- Together, we can launch a national campaign and build a system of student safety through the Peer to Peer movement.



HIGHER HEALTH

Higher Education & Training: Health, Wellness and Development Centre



COMMUNITY EDUCATION AND TRAINING (CET)

- Our Peer Educators can help enrol NEET youth (Not in Employment, Education or Training) through door-to-door outreach.
- Through this outreach, HIGHER HEALTH in partnership with CET Colleges can offer community education accredited programmes via its Life, Civic & Soft Skills Programmes (15-, 30- and 60-credit options).
- Higher Health will integrate its Civic & Soft Skills programme with National Senior Certificate for Adults (NASCA) as part of the reforms and work that has already started with the CET Branch.
- Through the 1 Day Training programme on the Civic Education module in Communication Education – can assist towards local government elections in saving our democracy.



CREATING JOBS FOR UNEMPLOYED ENTRY LEVEL PROFESSIONALS IN OUR COMMUNITIES (PSYCHOLOGISTS, COUNSELLORS, NURSES AND SOCIAL WORKERS)

- Higher Health in partnership with Department of Health, Social Development provides mentorship through our established campus service programme for all entry-level professionals
- Building skills and career pathways by creating job opportunities in rural, peri-urban and urban communities via our established campus service programme to the creation of sustainable jobs in areas with high demand
- Creating job opportunities for unemployed professionals strengthen healthcare and social support services for young students across our campuses
- Economic growth by creating entry-level job opportunities in communities



HIGHER HEALTH

Higher Education & Training: Health, Wellness and Development Centre





PROMOTING LOCAL EMPLOYMENT THROUGH MENTORSHIP OF ENTRY LEVEL PROFESSIONALS (PSYCHOLOGISTS, NURSES, CARE-GIVERS AND SOCIAL WORKERS)

- ✔ Builds skills and career pathways for individuals from underrepresented areas
- ✔ Contributes to the creation of sustainable jobs in areas with high demand.
- ✔ Strengthens healthcare and support systems in local communities
- ✔ Economic growth by creating entry-level job opportunities

FIRST THINGS FIRST WELLNESS DAY

HIGHERHEALTH
ACADEMY



KEY SERVICES: Peer to Peer Testing, Screening and Treatment Campaign

- HIV testing, screening and linkage to care;
- TB screening and linkage to care;
- STI testing, screening and linkage to care;
- Long-acting contraceptives
- Hypertension, diabetes and/or cardiovascular risk factors testing, screening and linkage to care;
- Cancer screening and linkage to care;
- Condom distribution programme;
- Male medical circumcision;
- Oral hygiene
- Eye testing
- Psychosocial support

COMFORT/SAFE ROOMS

- At every campus we are establishing a youth friendly Comfort Room / Safe Room.



HIGHER HEALTH 24 HOUR CRISIS HELPLINE

0800 36 36 36



Psychologist

Links students to our professional psychologists and counsellors, available 24 hours a day and 365 days a year, at no cost.



Thuthuzela Care Centre

These centers unite professionals – doctors, nurses, social workers, police, and forensic specialists – under one roof to provide holistic support to GBV or rape survivors.



Nurse

Students are directly connected to Higher Health nurses, ensuring they receive the necessary primary health care services whenever they need them.

